



## MAHOGANY CREEK BUSHCARE ACTION PLAN

**Document Number:** D12/109164 • **Adopted:** 23/11/2012 • **Minute Number:** MIN12.1296  
• **File:** 26279E • **Produced By:** City Services & Operations Group • **Review Date:**  
23/10/2012

### CONTACT INFORMATION

<b>Group Name:</b>	Mahogany Creek Bushcare Group
<b>Contact:</b>	Dennis and Noelene Ulrich
<b>Address:</b>	57 Page Ave, Nth Nowra
<b>Tel:</b>	4421 7857
<b>Reserve Name:</b>	Mahogany Creek Reserve
<b>Reserve No:</b>	NNN074
<b>Land Tenure:</b>	Shoalhaven City Council
<b>Comm. Land Type:</b>	Natural Area - Watercourse

### 1. BUSHCARE GROUP GOALS

<p>Aims: <i>(As per the Mahogany Creek Plan of Management 1999 attached)</i></p> <ol style="list-style-type: none"><li>1. To conserve biodiversity and maintain ecosystem function in respect of the land and</li><li>2. To maintain the land in its natural state and setting, and</li><li>3. To provide for the restoration and regeneration of the land.</li></ol> <p>Recognise and raise awareness of the biodiversity values of the Mahogany Creek Reserve as habitat corridor</p> <p>Objectives:</p> <ol style="list-style-type: none"><li>1. (Areas 1&amp;2) Mitigate further disturbance in bushland by keeping existing track pruned and clear for walking, removal of rubbish. Council to clear any large overhanging branches or trip hazards.</li><li>2. (Area 1) Reduce further weed infestation by target weeding of Honeysuckle, Camphor Laurel, Small and Large Leaf Privet, Blackberry and Moth Vine in resilient bushland.</li><li>3. (Area3) Target Madeira Vine weed (northern side of creek, urban interface), to prevent further prop gules spread downstream.</li><li>4. (Area 3) With council assistance, contain communities of weeds on (northern side of creek, urban interface), working at a rate commensurate with native vegetation establishment.</li><li>5. Raise awareness amongst local residents of the environmental values of Mahogany Creek Reserve</li></ol>
--

6. Establish links with local schools in the area to use the Mahogany Creek Reserve as an educational resource for students.
7. Increase community awareness with on ground participation and communication amongst local residents/ visitors to site/ Information Days to encourage new volunteer recruitment.

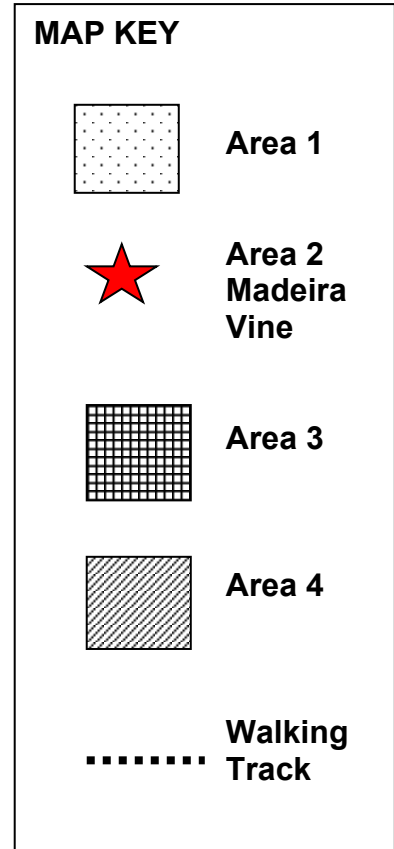
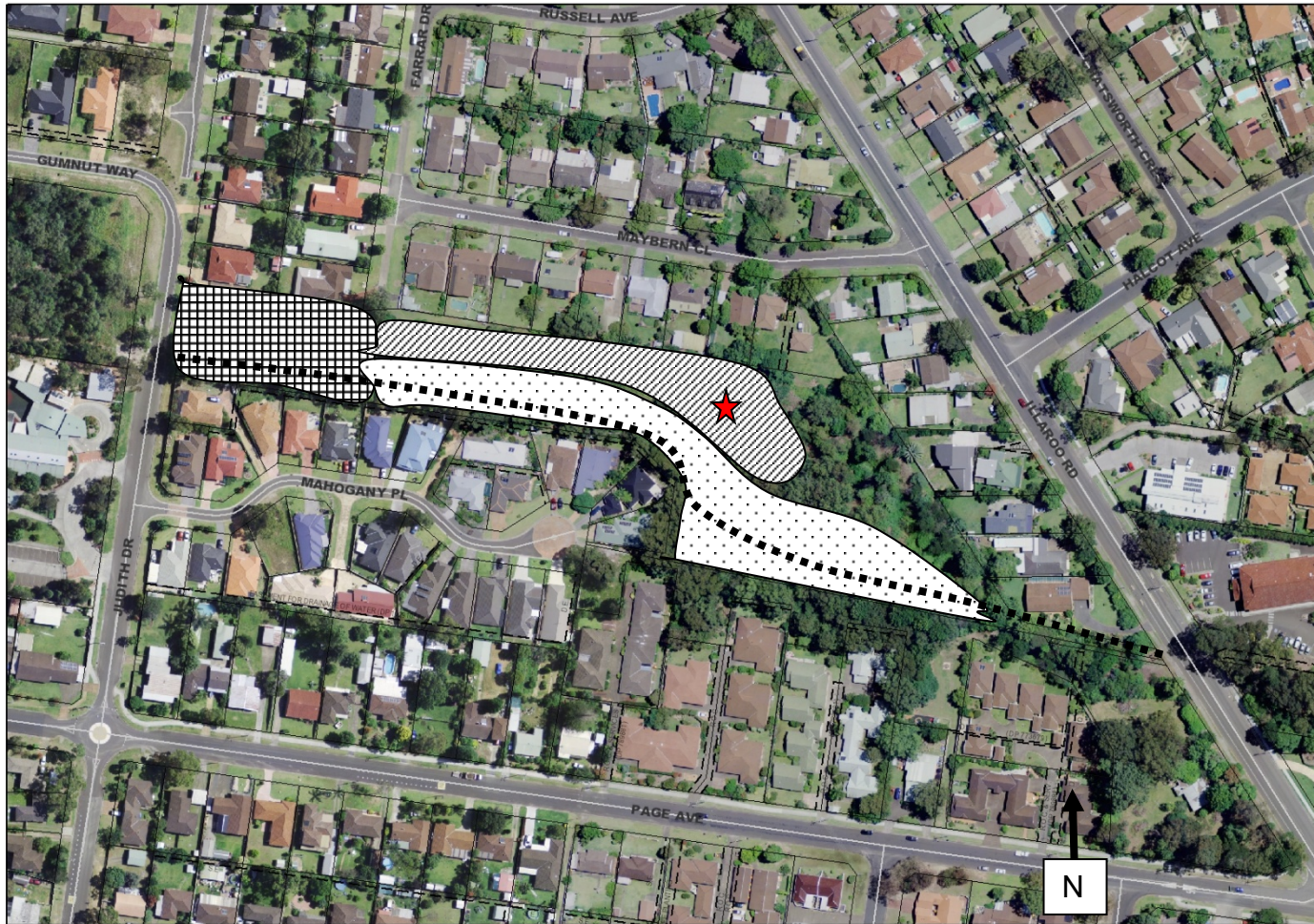
2. **SHOALHAVEN BUSHCARE GROUP ACTIVITIES TABLE (to be in conjunction with attached site map)**  
**NOTE: Priority should be rated as H = High (within 12 months); M = Medium (1-3 years); L = Low**

GROUP ACTION	PRIORITY	METHOD	TIME
<b>ZONE 1 – EASTERN SECTION OF RESERVE BETWEEN JUDITH DRIVE AND ILLAROO RD</b>			
<p>(Area 1)            Working south from the Judith Drive detention basin (southern side of creek), incorporating Swamp Mahogany Woodland and Turpentine/ Blackbutt Forest. Target weeds include Honeysuckle, Blackberry, Camphor laurel, Small and Large Leaf Privet and Lantana seedlings. Prioritise work in areas of greater resilience, with a focus on Honeysuckle canopy protection. Replacement Planting as required.</p>	H	<ul style="list-style-type: none"> <li>• Hand pull, scrape and paint honeysuckle</li> <li>• Cut &amp; paint Blackberry</li> <li>• Hand pull woody weed seedlings, cut and paint with glyphosate when diameter thicker than finger</li> <li>• Use recommended revegetation list</li> </ul>	On going
<p>(Area 2)            Madeira Vine site northern side of Ck, off Maybern Close where weed infestation is high. Bushcare Group to target Madeira Vine. Only a small amount of this has been sighted on the urban interface, important to keep in check and bag all prop gules to prevent further spread downstream. Replacement planting following weed control.</p>	H	<ul style="list-style-type: none"> <li>• Hand remove, ensure bagging all underground rhizomes and aerial tubers</li> <li>• Use recommended revegetation list</li> </ul>	On going
<p>(Walking Track)            Council to assist with risk management, pruning of vegetation along track to allow a clear walkway. Collection of household rubbish throughout site.</p>	M	<ul style="list-style-type: none"> <li>• Prune track clear using secateurs</li> <li>• Separate bagging of rubbish</li> </ul>	On going

<p>(Area 3) Judith Drive Detention Basin. Hand weeding maintenance around plantings and periodically spot spray of exotic grasses and other annual weeds.</p>	M	Hand removal of exotic grasses or spot spray with 1:100 glyphosate	On going
<p>(Area 4) Ongoing council assistance with weed control on northern side of creek, particular attention on control of vines (Honeysuckle, Cape Ivy, Moth Vine, Passionfruit, Jasmine, English Ivy.) *Crofton Weed, Wild Tobacco, Common Elder and Wandering Jew. A best practice approach would be to progressively remove weed species at a rate commensurate with native vegetation regeneration and establishment.</p>	H	Canopy protection, skirting around trees and spray vines Cut/paint woody weeds with glyphosate at rate of 1:1	On going
<b>ZONE 2 – WESTERN SECTION OF RESERVE BETWEEN JUDITH DRIVE AND PITT ST</b>			
<p>(Education and Awareness Raising) 1. Promote and hold Bushcare an open day to attract new volunteers and renew enthusiasm of the Bushcare Group</p>	H	<p>1.1 Write to surrounding residents inviting them to open day 1.2 Prepare open flyer, Media Release and distribute 1.3 Run open day with walk through reserve and BBQ</p>	2012

<p>2. Bushcare Group and Council to contact North Nowra School, Havenlea School and Illaroo Public School to establish a partnership with Bushcare Group, Council and School/s to utilise the reserve as an educational resource for students</p> <p>3. Bushcare Group to letter box drop the brochures “Being a Bush Friendly Neighbours” and “Grow Me Instead” to all surrounding residents to raise awareness of the negative effects of dumping garden waste in the reserve and benefit of replacing invasive ornamental garden plants.</p> <p>4. Bushcare Group hand pull or wick wipe the <i>Watsonia meriana</i> across sections of the reserve</p>	<p>M</p> <p>M</p>	<p>2.1 Council and Bushcare Group write to the three schools inviting them to be involved.</p> <p>3.1 Council to provide cover letter, flyers and booklets</p> <p>3.2 Bushcare Group to letter box drop brochures</p> <p>4. Hand pull smaller <i>Watsonias</i> and wick wipe larger ones with 50/50 diluted roundup</p>	<p>2012</p> <p>2013</p> <p>2012 on-going</p>
<p><b>Upgrade of Mahogany Creek Walking Track to district classification</b></p> <p>Support Council with linking up the Mahogany Creek Walking Track with the Bomaderry Creek Walking Track via the end of Jamieson Rd</p>	<p>L</p>	<p>Insure that linkage from Mahogany Creek to Bomaderry Creek is included as a possible future walking proposal in the Shoalhaven Walking Track Strategy</p>	<p>2013</p>

### 3. MAHOGANY CREEK BUSHCARE GROUP ACTION PLAN MAP A – EASTERN ZONE





# MAHOGANY CREEK BUSHCARE GROUP ACTION PLAN MAP B – WESTERN ZONE



**Map Key**

Unmaintained  
Walking Track

---

#### 4. BUSHCARE GROUP WHS & EQUIPMENT REQUIREMENTS

Type of Activity	Yes	SWMS name included
Manual weed control (cut & paint, scrape and paint etc)	√	SWMSNR040 Weed Control Activities
Chemical control (spraying of herbicides)	√	SWMSNR040 Weed Control Activities
Planting	√	SWMSNR030 Planting, Propagation and Seed Collection
Minor construction (walking track, fencing, outdoor furniture)	√	SWMSNR020 Track & Fence Construction & Maintenance
Propagation and seed collection		
Education (school groups, field days etc)		
Other		

#### 5. COUNCIL SUPPORT

Technical advice and support

- b. Provision of PPE equipment
- c. Supply tools, herbicide and materials within the constraints of budget
- d. Administration support
- e. Assistance with grant application, administration and management.
- f. Graphic design and printing assistance
- g. Assistance with facilitation and negotiation with third parties

#### 6. HAS A SITE HAZARD AND RISK ASSESSMENT BEEN COMPLETED FOR THE BUSHCARE SITE?

Yes



**7. LIST THE PERSONAL PROTECTION EQUIPMENT REQUIRED FOR VOLUNTEERS WHILST WORKING ON THE SITE**

<b>PPE Equipment Required</b>	<b>Date issued</b>
First Aid Kit	2007 Need update
Gloves	2007 Need update
Sunscreen	2007 Need update
Insect repellent	2007 Need update

**8. POSSIBLE FUTURE FUNDING**

<b>Project</b>	<b>Funding source</b>
Restoration of the Mahogany Creek Riparian Corridor	SRCMA or Australian Government

**9. PLEASE LIST OTHER LOCAL OR REGIONAL MANAGEMENT PLANS OR STRATEGIES THAT THIS PLAN RELATES TO**

<b>Name of document</b>	<b>Year it was produced</b>	<b>Produced by</b>
Mahogany Creek Plan of Management – Community Plan No. 3	1999	Shoalhaven City Council
Generic Community Land Plan of Management – Natural Areas	2003	Shoalhaven City Council
SRCMA Catchment Action Plan	2008	Southern Rivers Catchment Management Authority

## 10. RECOMMENDED PLANTING/REVEGETATION SPECIES LIST

<b>OVERSTOREY TREES</b>	
<b>Botanical</b>	<b>Common</b>
<i>Eucalyptus punctata</i>	Grey Gum
<i>Eucalyptus robusta</i>	Swamp Mahogany
<i>Eucalyptus sclerophylla</i>	Scribbly Gum
<i>Syncarpia glomulifera</i>	Turpentine
<b>SHRUBS</b>	
<b>Botanical</b>	<b>Common</b>
<i>Acacia ulicifolia</i>	Prickly Mosses
<i>Allocasuarina littoralis</i>	Black She Oak
<i>Banksia serrata</i>	Old Man Banksia
<i>Banksia spinulosa</i>	Hairpin Banksia
<i>Kunzea ambigua</i>	Tick Bush
<i>Pittosporum revolutum</i>	Rough Fruited Pittosporum
<i>Pultanea daphnoides</i>	Bush Pea
<b>UNDERSTOREY (grasses, herbs, climbers)</b>	
<b>Botanical</b>	<b>Common</b>
<i>Gonocarpus micranthus</i>	Ragwort
<i>Hardenbergia violacea</i>	Running Postmen
<i>Imperata cylindrica</i>	Blady Grass
<i>Juncus sp</i>	Native Rush
<i>Kennedia rubicunda</i>	Dusky Coral Pea
<i>Lomandra longifolia</i>	Spiny Mat Rush

## 11. SITE WEED LIST

<b>Noxious</b>	<b>Environmental</b>	<b>Control Method</b>
Ageratina adenophora (Crofton Weed)		Hand pull, bag seed/ spray 1:100 glyphosate
Lantana camara (Lantana)		Hand pull seedlings/ cut and paint with glyphosate, spray or splatter large infestations
Rubus fruticosus (Blackberry)		Cut & paint with glyphosate,/hand dig
	Anredera cordifolia (Madiera Vine)	Hand remove, bagging all propagule (rhizome and aerial tubers)
	Araujia sericifera (Moth Vine)	Hand pull, bag seed/ spray large infestations
	Bidens pilosa (Cobblers Pegs)	Hand pull, bag seed/ spray 1:100 glyphosate
	Cinnamomum camphora (Camphor Laurel)	Cut & paint with glyphosate/ hand pull seedlings
	Delaria odorata (Cape Ivy)	Hand pull, bag seed/ spray large infestations
	Jasminum polyanthum	Hand remove, spray large

	(Jasmine)	infestations
	Ligustrum spp (Small and Large Leaf Privet)	Cut & paint with glyphosate/ hand pull seedlings
	Lonicera japonica (Honeysuckle)	Hand weed/scrape and paint with glyphosate/ spray large infestations
	Nephrolepis cordifolia (Fishbone Fern)	Hand weed, pile biomass insitu
	Paspalum dilatatum (Paspalum)	Spot spray 1:100 glyphosate/ crown out with knife and bag seed
	Passiflora sp (Passionfruit)	Hand pull, bag seed/ spray large infestations
	Sambucus nigra (Sambucus)	Cut & paint with glyphosate/ hand pull seedlings
	Solanum mauritianum (Wild Tobacco)	Cut & paint with glyphosate/ hand pull seedlings
	Tradescantia fluminescens (Wandering Jew)	Hand remove bagging all propagule, spray large infestations
	Zantedeschia aethiopica (Arum Lily)	Hand remove, cut head flowers

## 12. BUSHCARE SITE SPECIES LIST

<b>OVERSTOREY TREES</b>	
<b>Botanical</b>	<b>Common</b>
<i>Acmena smithii</i>	Lilypilly
<i>Eucalyptus globoidea</i>	Stringy Bark
<i>Eucalyptus imitans</i>	Stringy Bark
<i>Eucalyptus pilularis</i>	Blackbutt
<i>Eucalyptus punctata</i>	Grey Gum
<i>Eucalyptus robusta</i>	Swamp Mahogany
<i>Eucalyptus sclerophylla</i>	Scribbly Gum
<i>Syncarpia glomulifera</i>	Turpentine
<b>SHRUBS</b>	
<b>Botanical</b>	<b>Common</b>
<i>Acacia ulicifolia</i>	Prickly Moses
<i>Allocasuarina littoralis</i>	Black She Oak
<i>Banksia serrata</i>	Saw Toothed Banksia
<i>Banksia spinulosa</i>	Hairpin Banksia
<i>Elaeocarpus reticulatus</i>	Blueberry Ash
<i>Elaeocarpus reticulatus</i>	Blueberry Ash
<i>Glochidion ferdinandi</i>	Cheese Tree
<i>Kunzea ambigua</i>	Tick Bush
<i>Leptospermum juniperinum</i>	Tea Tree
<i>Leptospermum polygalifolium</i>	Tea Tree
<i>Leptospermum trinervium</i>	Paperbark
<i>Pittosporum revolutum</i>	Rough Fruited Pittosporum

<i>Pittosporum undulatum</i>	Sweet Pitosporum
<i>Pultanea daphnoides</i>	Egg And Bacon Pea
<b>UNDERSTOREY (grasses, herbs, orchids)</b>	
<b>Botanical</b>	<b>Common</b>
<i>Centella asiatica</i>	Centella
<i>Cyathochaeta diandra</i>	Rush
<i>Entelasia stricta</i>	Panic Grass
<i>Eriostemon australasius</i> spp. <i>asuralasius</i>	Pink Wax Flower
<i>Gleichenia dicarpa</i>	Pouched Coral Fern
<i>Gonocarpus micranthus</i>	Rasp Wort
<i>Hydrocotyle peduncularis</i>	Forest Pennywort
<i>Imperata cylindrica</i>	Blady Grass
<i>Juncus</i> sp	Sedge
<i>Lepyrodia gracilis</i>	Sedge
<i>Lomandra longifolia</i>	Spiny Mat Rush
<i>Microlaena stipoides</i>	Weeping Grass
<i>Oplismenus imbecillis</i>	Basket Grass
<i>Scoenus melanostachys</i>	Sedge
<i>Thelymitra ixioides</i>	Dotted Sun Orchid
<i>Thelymitra nuda</i>	Plain Sun Orchid
<b>UNDERSTOREY (vines &amp; climbers)</b>	
<b>Botanical</b>	<b>Common</b>
<i>Hardenbergia violacea</i>	Running Postmen
<i>Kennedia prostrata</i>	Prostrate Dusky Coral Pea
<i>Kennedia rubicunda</i>	Dusky Coral Pea
<i>Smilax glycyphylla</i>	Sarsparilla

**Bushcare Group Name:** .....

**Coordinator Name:**.....

**Signature:** .....

**Date:** ...../...../.....